

Evening Party!

Let's discover European Wines and Dishes



2011 May 27 (Friday)

20:00~22:00

Venue: Seorae Global Village Center

Participation fees: 20,000 won/participants

Evening Party!

Let's discover European Wines and Dishes

PROGRAM

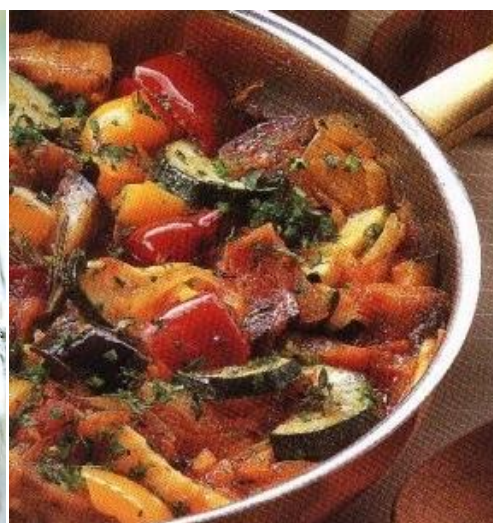
Time	Contents
20:00~20:10	Congratulations, Welcome Speech, Presentation of the program
20:10~20:40	European Cookery Experience
20:40~21:00	Presentation by Ph. Pierre METTELIN, Professor at Kyunghee University Topic: Thee European wines (geography, history, specificities)
21:00~21:10	Questions/Answers
21:10~22:00	Tasting European Wines (France, Germany, Italy, Spain) Explication by Ph. Pierre METTELIN, Professor at Kyunghee University
21:10~22:00	Tasting European Dishes (France, Germany, Italy, Spain)
22:00	End of the evening Party



Italian Dish: Risotto with sea-food



French Dishes: Tomates farcies and ratatouille (from Provence)



Spain Dish: Serrano Ham



German Dessert: Gedeckter Apfelkuchen



Application

Evening Party!

Let's discover European Wines and Dishes

2011 May 27 (Friday)

20:00~22:00

1. Personal Information

- Name / Surname :
- Nationality :
- Phone number :
- E-mail :
- Address :

Number total of participants:person(s)

Please, precise Name, Surname, phone number of each participant

1.
2.
3.
4.
5.

2. Participation Fee: 20,000 won/ person

Seorae Global Village Center, 3rdFl., 90-12 Banpo 4 dong, Seocho-gu, Seoul 137-044

Tel : 02-2155-8949 / 8916 / 8915 Fax : 02-2155-891

<http://seoul.global.go.kr/seorae>